



Dean E. Cramer, CAPT, USN (Ret.)

“Dynamite”

Date of Designation: 3 July 1958 NA# V-14045

Dates of Active Duty: January 1951 - October 1983

Total Flight Hours: 3,800

Carrier/Ship Landings: Fixed wing: 925

Approximate Flight Hours:

Jet: 3,500 Prop: 300

Combat Tours:

Vietnam: Jul.1967- Jan. 1968, (A4E) - 111 Missions
 Vietnam: Aug. 1967 - Nov. 1969, (A4E) - 75 Missions
 Vietnam: Jun. 1971 - Nov. 1971, (A7B) - 48 Missions
 Vietnam: Jun. 1972 - Feb. 1973, (A7B) - 163 Missions

Aviation Commands:

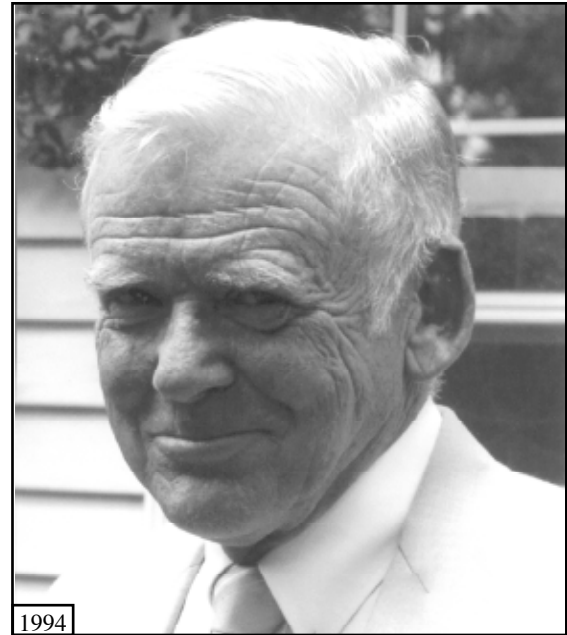
CO, VA-155
 COMCAW-17
 CO, USS *Kalamazoo*
 Commander, TACWINGSLANT
 Commander, SERVON FOUR

Combat Awards:

5 Distinguished Flying Crosses
 Bronze Star Medal
 43 Air Medals (7 Individual, 38 Strike/Flight)
 2 Navy Commendation Medals

Non-Combat Awards:

Legion of Merit
 2 Meritorious Service Medals
 Good Conduct Medal



Duty Assignment Chronology

1951-1956 Paygrades E 1 through E 6, Aviation Electrician (AE)
 1956 Commissioned Officer, USN, OCS, Holloway Plan
 1956-1958 Flight Training.
 1958-1962 VA 94 (A4B) two cruises on USS *Ranger*.
 1962-1965 NATTC Glynco, GA (FJ-4B).
 1965-1966 Commander Second Fleet Staff, Asst. Strike Warfare Officer, requested early rotation for combat assignment.
 1966-1969 VA 163,186 combat missions aboard USS *Oriskany* and USS *Hancock*.
 1969-1970 Naval Postgraduate School, Monterey, CA
 1970-1971 Commander Light Attack Wing Pacific Staff
 1971-1973 VA-155, XO & CO. 211 combat missions and two cruises onboard USS *Oriskany*
 1973-1975 Commander Naval Recruiting Command, Head of Aviation Officer Recruiting.
 1976 1977 Commander Carrier Air Wing 17, USS *Forrestal*.
 1977 Commander Naval Air Force Atlantic Staff, Air Wing Training Officer.
 1978-1979 USS *Kalamazoo*, CO
 1979-1980 Commander Tactical Wings Atlantic, Chief of Staff and Commander.
 1980-1982 Commander Service Squadron FOUR, (10 ships).
 1982 1983 Deputy Chief of Naval Operations Air Warfare) Staff, Head Aircraft Requirements Branch (OP 506)

Summary of Significant Career Events

- (1) Aircraft flown - T 34, T 28, TV 2, F9F, FJ4, A4B, A4E, A7B, A7E, TA7E, F4, E2, A6E, KA6D, F/A18.